

**Appendix C- Map of Project Location**

Y W B

MN07-071

MN07-071

EXHIBIT 1.2 C

Notes:

Coordinates used on these maps were provided from the proponent on their form 1. These maps have been created to show the general area of the proposed project to the viewer. The coordinates that were provided for this map are listed below in Table. 1.

Coordinates	UTM	DMS
Project location	418726E, 6963369N	62 47.6Lat, 136 35.6Long

**Table. 1**

Created by: Russell McDiarmid  
YESAB  
March 1, 2007

Y W B

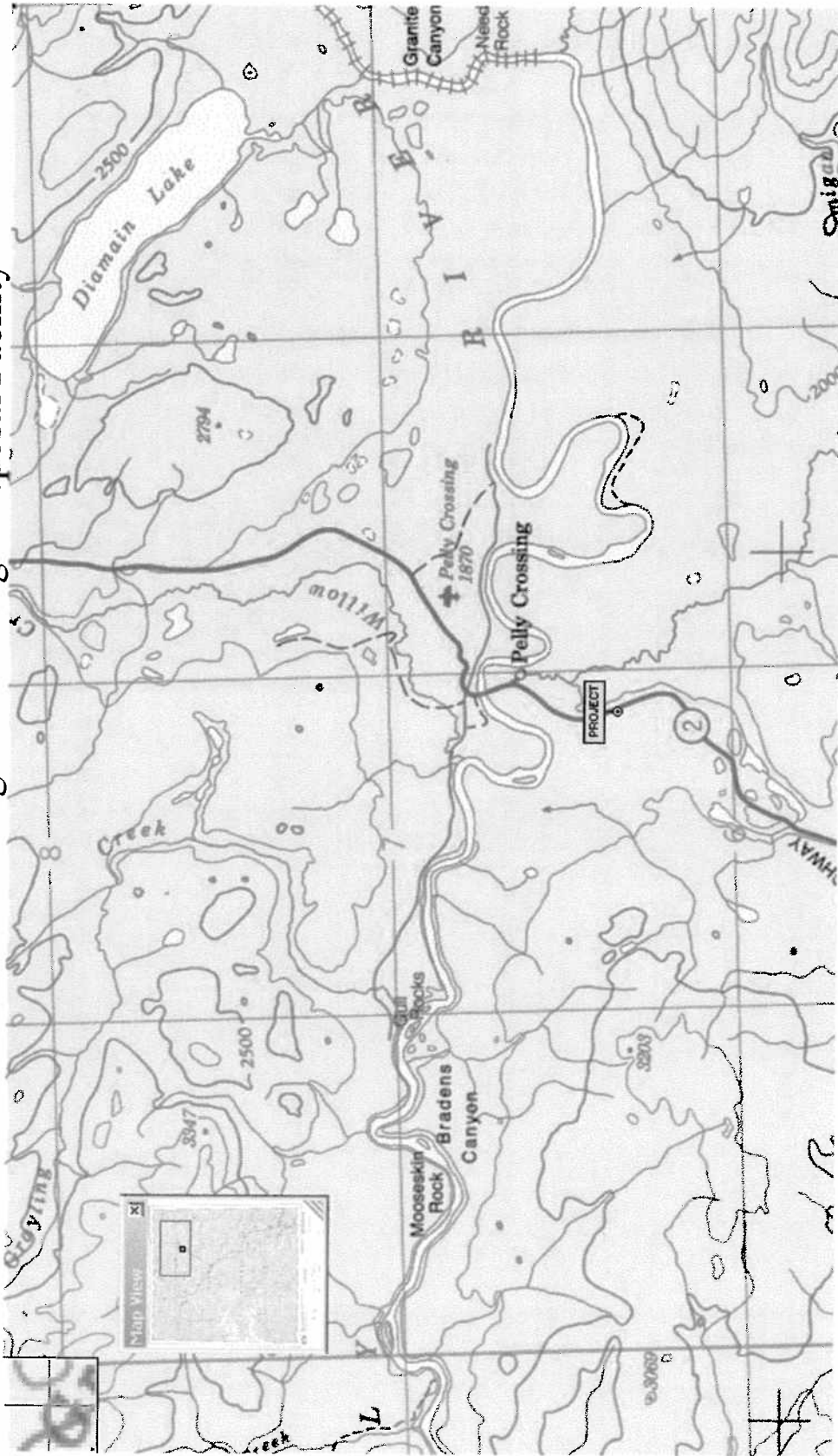
MN07-071

MN07-071

EXHIBIT 1.2 C



OziExplorer Map of Project #2007-0036  
Selkirk First Nation Long Term Sewage Disposal Facility



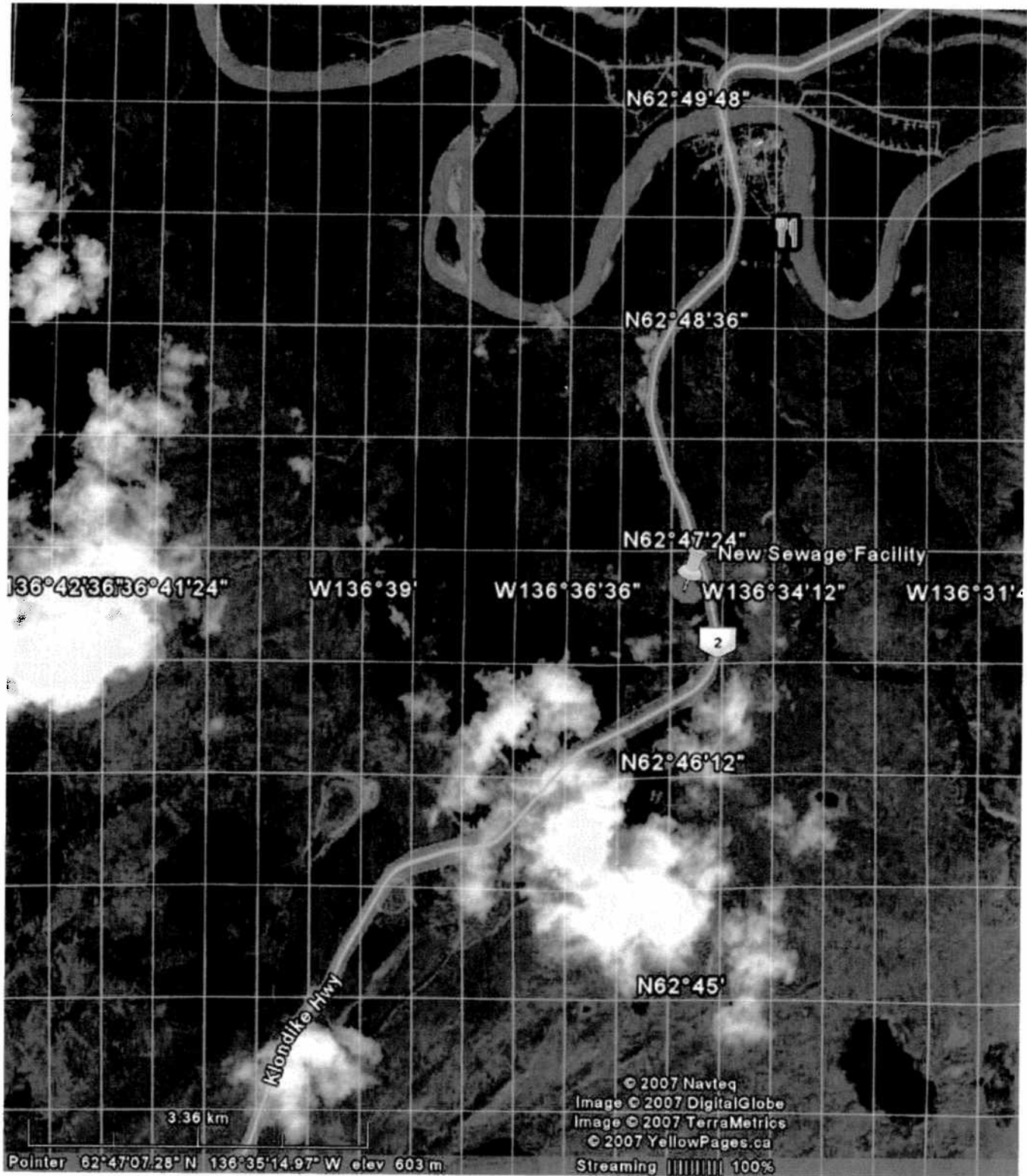
YWB

04 16 2007

MN07-071

MN07-071

EXHIBIT 1.2 C



Y W B

04-16-2007

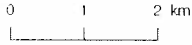
MN07-071

MN07-071

EXHIBIT 1.2 C

# Lútsäw Wetland

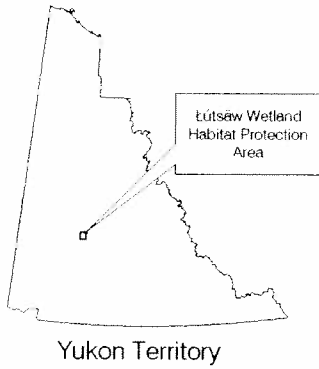
## Habitat Protection Area



Habitat Protection Area Boundary

Selkirk First Nation Settlement Land adjacent to Habitat Protection Area

The positions of boundaries and other features on this map are approximate. For legal descriptions, refer to the LWHPA Administrative Plan, No. 86458.



Pelly Crossing

Män Dinnts'ik  
(Stink Lake)

Highway

Män Ts'ündoa  
(Long Lake)

Dezra Män  
(Cow Moose Lake)

Tthe Ndu Män  
(Rock Island Lake)

D-zäna Män  
(Muskrat Lake)

Selkirk  
R-10B

Klondike

Lutsäw Män  
(Jackfish Lake)

Selkirk  
R-03A

Lutsäw  
Tagiä  
(Jackfish Creek)

Chät Män  
(Duck Lake)



Y W B

Department of Environment Map ID: Env 026 001

MN Yukon  
Environment  
Geomatics