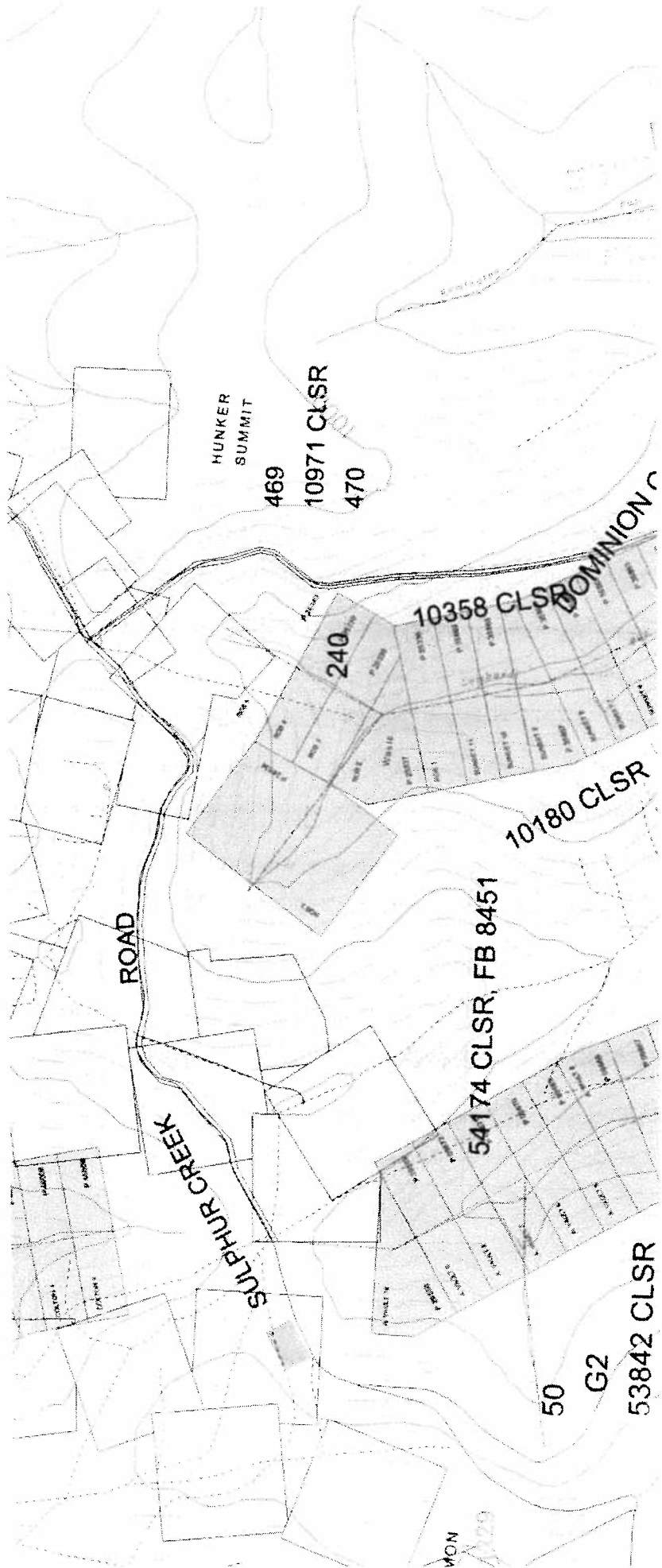


MAP 15 0 15d



YWB

DEC 18 2009

PM09-663

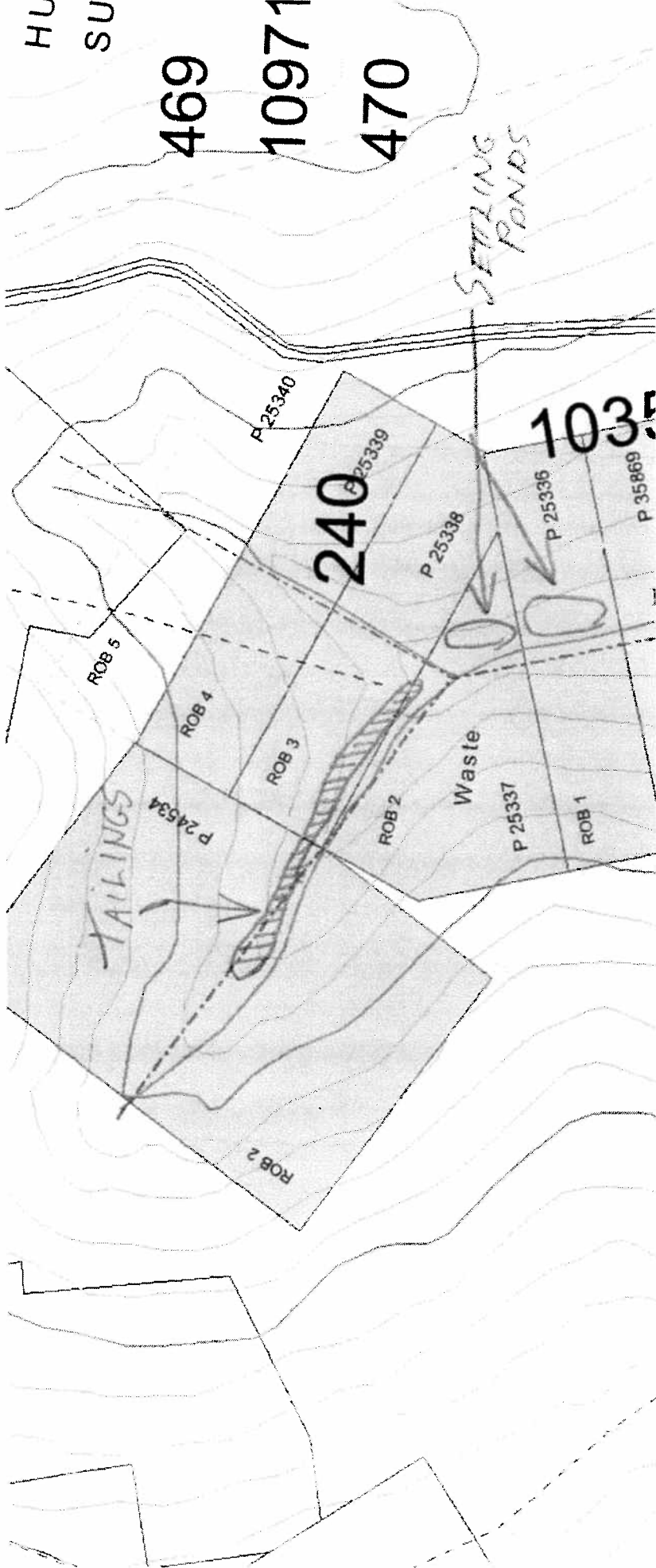
HU
SU

469

10971

470

SETTLING
POND



YWR

DEC 1 0 2009

PM09-663

FUEL SPILL CONTINGENCY PLAN

0.1.0 A SMALL SCALE PLACER OPERATION OF TWO PERSONS, EDWARD LEE AND FLOUÏ THOMPSON, BOTH OF WHOM HAVE BEEN INVOLVED IN PLACER MINING AND REPERCUSSION FOR OVER 30 YEARS.

2.0 ACCESS TO CLAIMS WILL BE THE HUNKER ROAD 30 KM TO THE SUMMIT, THEN $\frac{1}{2}$ KM ACCESS TRAIL TO CLAIMS.

3.0 NO HAULAGE CONTRACTOR NEEDED.

4.0 SPILL PREVENTION WILL INCLUDE INSPECTING PICK UP TRUCK FOR ROAD WORTHY, SECURING TIDY TANK FIRMLY IN PICKUP BOX, INSURE TANK FILLING CAP IS FIRMLY TIGHT AFTER FUELING. CARRY INSURANCE POLICY IN PICKUP TRUCK AND MONITOR WEATHER & ROAD CONDITIONS.

YWB

11/1/03

PM09-663

5.0 SPILL RESPONSE EQUIPMENT WILL CONSIST OF ONE KOMATSU FRONT END LOADER, ONE SMALL EXCAVATOR, ONE EMPTY BARREL, ABSORBANT PADS AND DETERGENT.

EMPTY BARREL AND PADS WILL BE KEPT AT FUELING STATION, PADS FOR USE IF SPASHING OCCURED DURING FUELING OR BARREL WAS DISCOVERED TO HAVE A LEAK.

EXTRA BARREL TO TRANSFER FUEL TO IN EVENT OF FUEL LEAK.

YWB

DEC 18 2009

PM09-663

6.0 TRAINING PROCEDURES WILL CONSIST OF FLOYD AND I DISCUSSING THIS PLAN.

① IN THE EVENT OF A SPILL IE. A RUPTURED BARREL OR TIDY TANK; THE TANK MUST IMEDIATLY BE POSITIONED AS TO MINIMIZE THE SPILL.

② ABSORBENT PADS TO MOP UP ANY ESCAPED FUEL.

③ CALL SPILL HOTLINE 505-677-7244 FOR INSTRUCTIONS ON SOIL CLEANUP.

7.0 CONTAINMENT PROCEDURES ARE AS

FOLLOWS: LAND SPILL (SMALL)

Wipe up with absorbent pads
and remove contaminated soil
with shovel to be burned with
paper in burning barrel.

LARGE LAND SPILLS IE. BARREL
OR TIOY TANK, TURN TANK TO
MINIMIZE SPILL, ABSORBENT PADS
TO CONTAMINATED AREA, AND
TRANSFER REMAINING FUEL TO AN
ALTERNATE BARREL.

WATER SPILL (SMALL) IE MACHINE
HAS DRIPPEN OIL INTO PUDDLE, USE
DETERGENT TO DRIVE OIL TO EDGES
OF PUDDLE AND CLEAN UP WITH
ABSORBANT PADS.

WATER SPILL (LARGE) IE BARREL HAS
PUNCTURED AND ENTERING CREEK.

- ① TURN BARREL TO STOP FURTHER SPILLING
- ② TURN WATER INTO SPILLING POUNDS
TO CONTAIN SPILL.
- ③ CALL FIRE DEPARTMENT

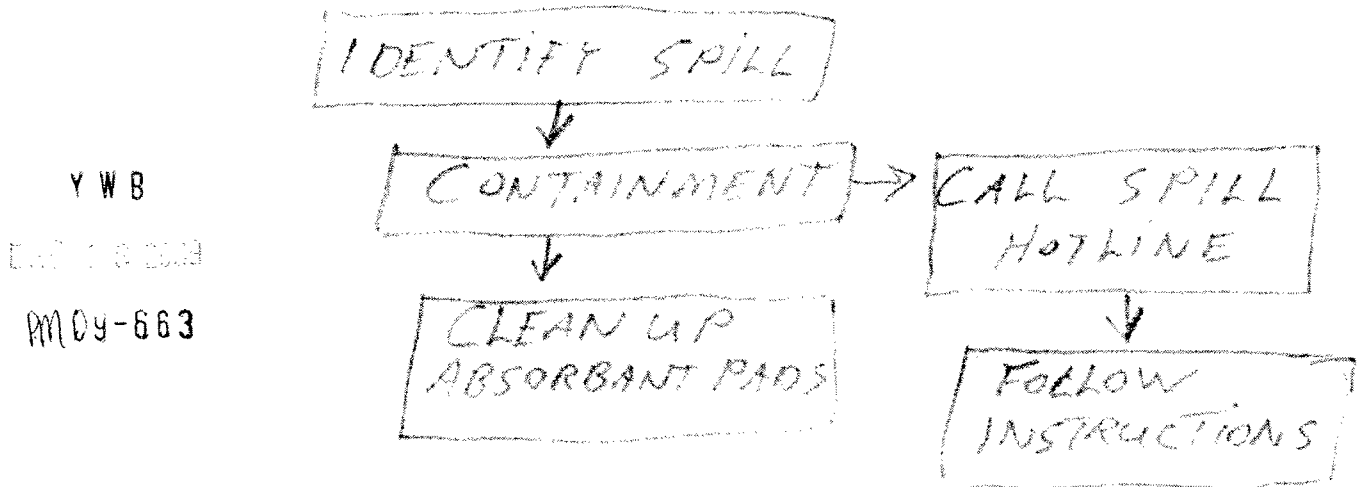
YWB

DEL 7/2/00

PM09-663

8.0 SPILL SITE CLEANUP (SEE 7.0)

7.0 FLOYD TRAVIS OR EDWARD LILLEN
WILL REPORT A SPILL BY TELEPHONE.
SPILL REPORTING FLOW CHART



FUEL SPILL NOTES

A. SPILL PREVENTION - MAINTAIN MACHINERY
- SECURE TANKS - BARRELS
- DAILY INSPECTIONS

B. SNOW OR PERMA-FROST - ONLY WORKING
SUMMER MONTHS
- NO PERMA-FROST

C. BURNING OR STEAM LIMITED TO POWER
PRODUCTS (BURNING BARREL)

D. RECORDING FUEL TANKS - LOG BOOK

CONTACT EDWARD LILLEN (202-20)

PHONE 202-202-2020 PHONE 202-52-215-257-2776

CHANGING TO A TANK... (partially obscured)