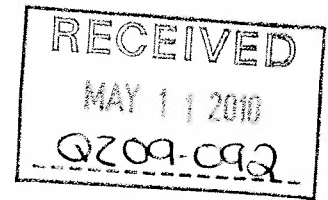


FROM : KENO COMMUNITY CLUB

FAX NO. : 867 9953103

May. 11 2010 11:57AM P1



11 May 2010

Yvonne Bessette
Box 2
Keno, Yukon
Y0B 1M0
Fax: 995-3103

Carola Scheu, Manager
Yukon Water Board
106 - 419 Range Road
Whitehorse, Yukon
Y1A 3V1
Fax: 456-3890

Further to our telephone conversation of this morning, following please find two pages. From a large map by Dept. of Mines of Technical Surveys July, August, 1955, I have copied:

- 1) The top left corner, which shows the date, etc of map
- 2) The bottom right corner of the map, where the mill is built, north of Lightning Creek and south of Christal Lake

From the YWB Register, Volume I, 1. Application 1.2 Quartz Undertaking Information Sheets, question 4: Name of Waterbody(ies): Alexco, among others, lists Mackeno Creek. There is no such creek. Please see the map.

Alexco does not mention McLeod Creek or Hinton Creek, which flow into Christal Lake. This is not "upper" Christal Creek. Christal Creek flows in the opposite direction, north, out of Christal Lake.

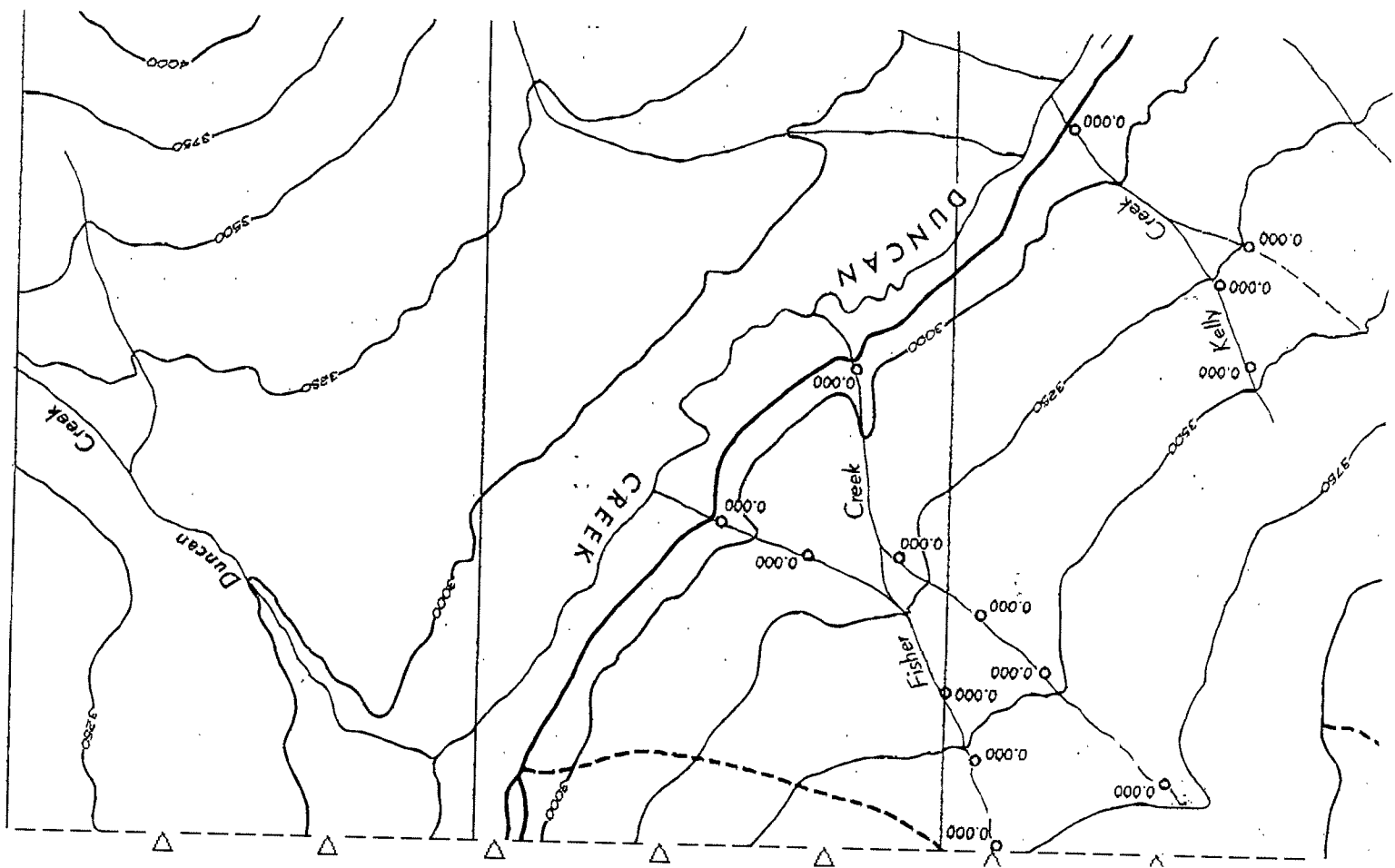
In the same question, they also list "Groundwater". But question 26 (f) Information pertaining to groundwater in the project area, including location, flow directions and quality. Alexco answered "N/A". Can this be explained?

Yvonne Bessette
yvonne@northwestel.net

Yvonne Bessette

RECEIVED

MAY 11 2010



135° 35' 63° 57' 33'

LEGEND

- Concentration of heavy metal 0.010 or greater ppm, in streams 0.15 ●, at
- Concentration of heavy metal, less than 0.010 ppm, in streams 0.001 ○, at
- Ore vein (defined, assumed)
- Post-ore fault or fracture zone
- Lineament from air photographs (in some places may represent trace of an ore vein or fault)
- Adit (accessible, caved)
- Shaft
- Prospect pit or open cut
- Mining properties

INDEX TO MINING PROPERTIES

- | | | |
|--------------|------------------|----------|
| 1 Tin Can | 5 Dragon | 10 Cor. |
| 2 Bluebird | 6 Hector-Calumet | 11 Dixie |
| 3 Yukeno | 7 Cream | 12 Elsa |
| 4 Mackeno | 8 No Cash | 13 Silvy |
| 9 Birmingham | | |

Field work by R. W. Boyle, E. L. Pekar and P. R. Patterson

To accompany Bulletin 36

Approximate magnetic declination, 3 1/4° 30' E

