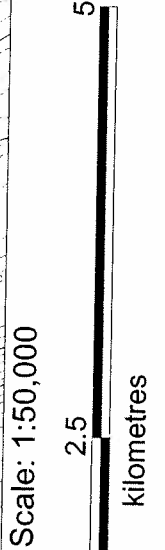
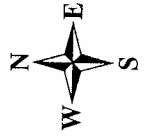
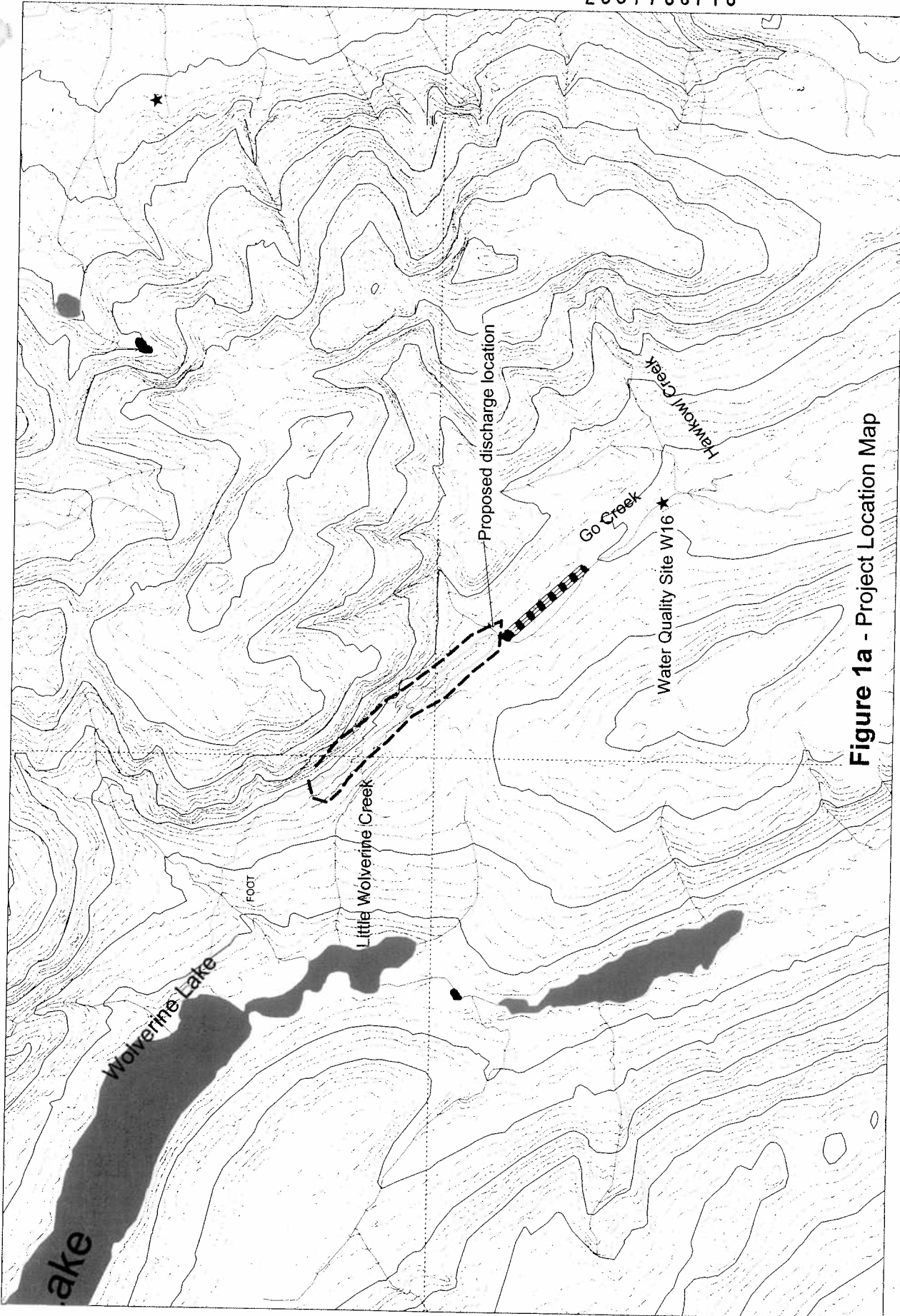


REPLACES ORIGINAL  
VERSION RECEIVED  
2001/05/16



**Figure 1a - Project Location Map**

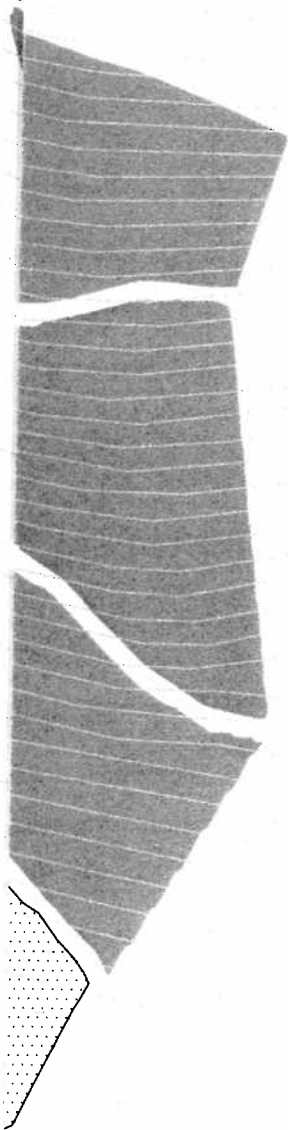
- Project Area
  - Exploration Roads
  - Wolverine Airstrip
- Y W B

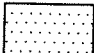


07-29-2004

QZ01-051

Contour Interval: 20m

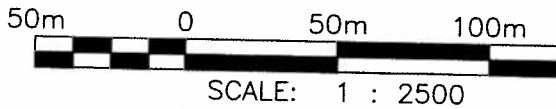
REPLACES ORIGINAL  
VERSION RECEIVED  
2001/05/16



	MINING AREA "A" AND TEST MINING AREA
	MINING AREAS PROJECTED TO PLAN VIEW
	MAIN RAMP/DECLINE DEVELOPMENT FOR TEST MINING

NOTES:

1. BASE TOPOGRAPHY, MINING AREAS, RAMP/DECLINE DEVELOPMENT AND PORTAL ALL PROVIDED BY EXPATRIATE RESOURCES LTD.



Y W B

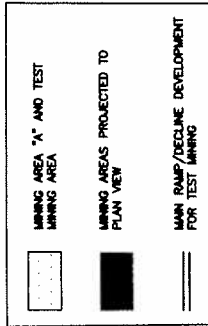
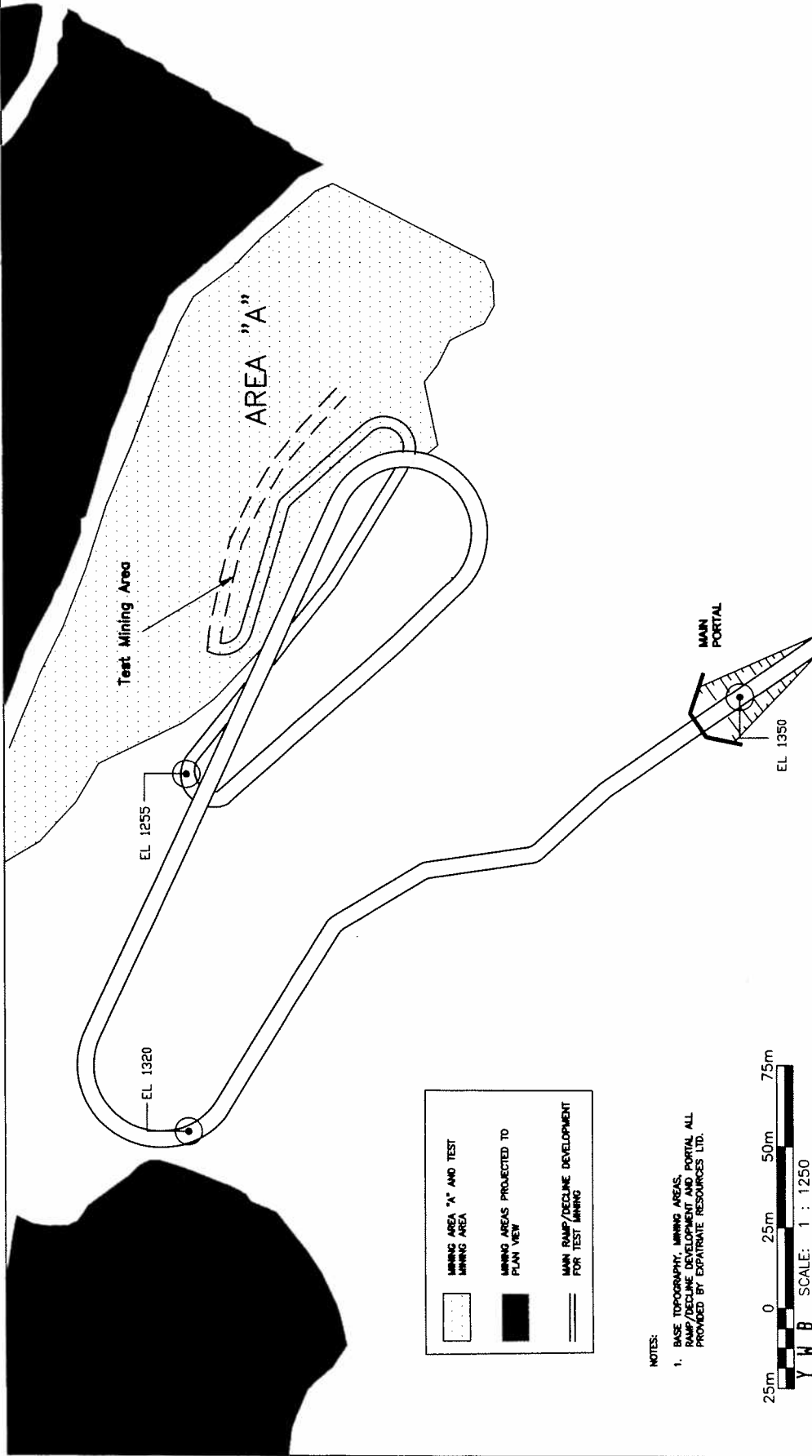
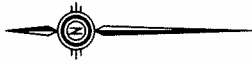
-07- 23 2004

0207-051

AS A MUTUAL PROTECTION TO OUR CLIENT, THE PUBLIC AND OUR SUBMITTED FOR THE CONFIDENTIAL INFORMATION OF OUR CLIENT USE AND/OR PUBLICATION OF DATA, STATEMENTS, CONCLUSIONS AND DRAWINGS IS RESERVED PENDING OUR WRITTEN APPROVAL.

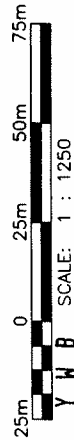
OLVERINE TEST MINING PROGRAM  
UNDERGROUND MINE PLAN

REV.	DATE	REVISION	DWG. No.	REV.
			3-002-01	0
			FIGURE 2	



NOTES:

1. BASE TOPOGRAPHY, MINING AREAS, RAMP/DECLINE DEVELOPMENT AND PORTAL ALL PROVIDED BY EXPATRIATE RESOURCES LTD.



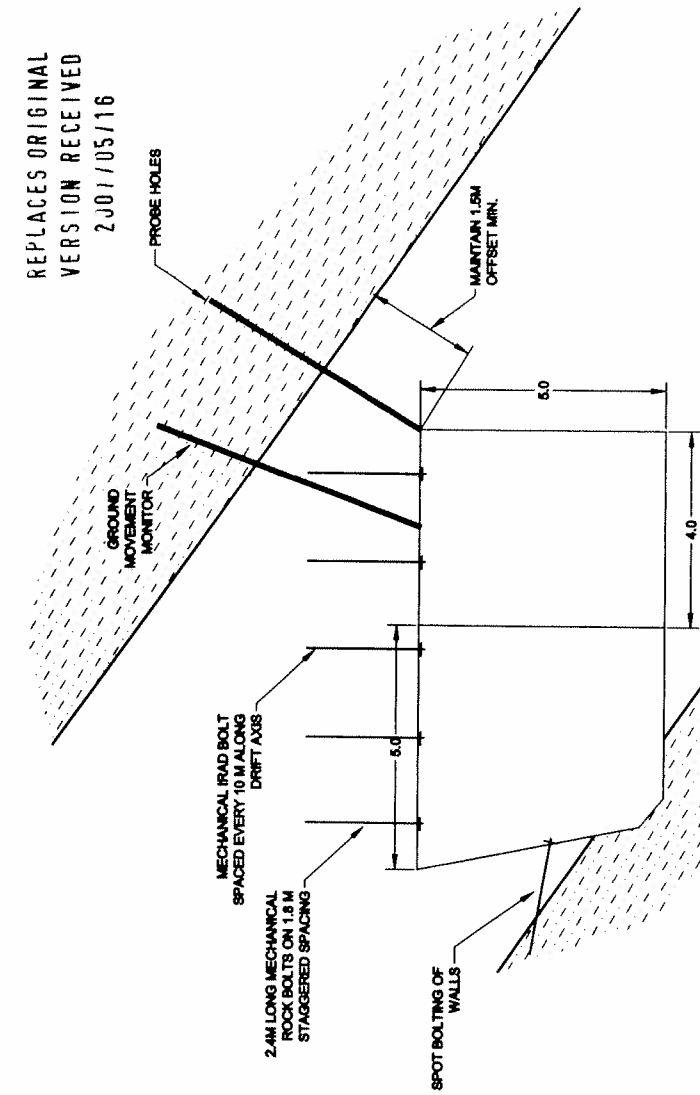
Y W B SCALE: 1 : 1250

07 29 2004

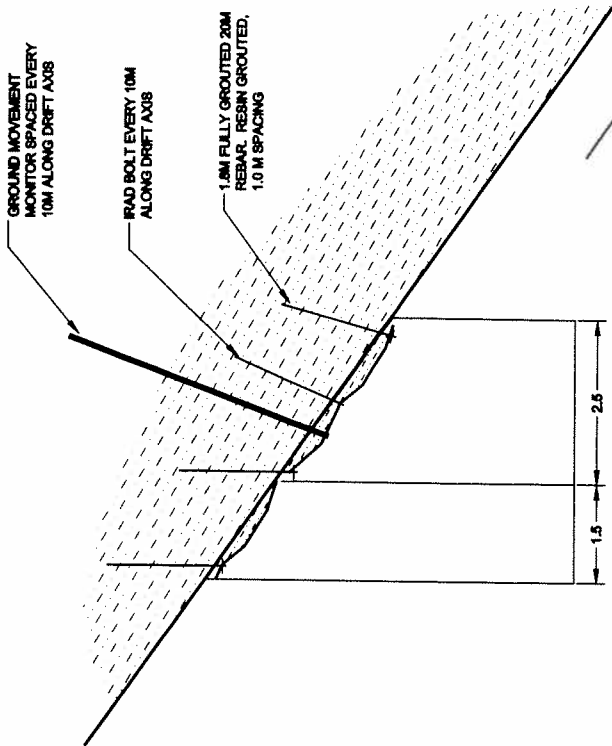
0201-051

<p>AS A MUTUAL PROTECTION TO OUR CLIENT, THE PUBLIC AND OURSELVES ALL REPORTS AND DRAWINGS ARE SUBMITTED FOR THE CONFIDENTIALITY OF OUR CLIENT AND OUR PROJECT. NO PART OF THIS REPORT OR DRAWING IS TO BE REPRODUCED OR TRANSMITTED IN ANY FORM OR BY ANY MEANS, ELECTRONIC OR MECHANICAL, INCLUDING PHOTOCOPYING, RECORDING, OR BY ANY INFORMATION STORAGE AND RETRIEVAL SYSTEM. WITHOUT THE WRITTEN APPROVAL OF BGC ENGINEERING INC. OR EXPATRIATE RESOURCES LTD. OUR LIABILITY IS LIMITED TO THE SCOPE OF OUR CONTRACT AND WE MAKE NO WARRANTY OF ANY KIND, EXPRESS OR IMPLIED, INCLUDING MERCHANTABILITY OR FITNESS FOR A PARTICULAR PURPOSE. OUR LIABILITY IS LIMITED TO THE SCOPE OF OUR CONTRACT AND WE MAKE NO WARRANTY OF ANY KIND, EXPRESS OR IMPLIED, INCLUDING MERCHANTABILITY OR FITNESS FOR A PARTICULAR PURPOSE.</p>		<p>SCALE: AS SHOWN DATE: APR 2001 DRAWN: GEJ DESIGNED: SB CHECKED: APPROVED:</p>	<p>PROJECT TITLE PROJECT No. Dwg. No. REV.</p>
<p>BGC ENGINEERING INC. AN APPLIED EARTH SCIENCES COMPANY Vancouver, B.C. Phone: (604) 664 5900</p>		<p>WOLVERINE TEST MINING PROGRAM TEST MINE DEVELOPMENT</p>	<p>0263-002-01 FIGURE 3 0</p>
<p>CLIENT: EXPATRIATE RESOURCES LTD.</p>		<p>DRAWN [ ] CHECKED [ ] APPROVED [ ]</p>	<p>REV. DATE REVISION</p>

REPLACES ORIGINAL  
VERSION RECEIVED  
2 J01/05/16



TEST MINING AREAS 2 AND 3  
SCALE 1:75



- NOTES:
1. IN TEST MINING AREA 1, THE DRIFT WILL BE EXCAVATED IN ORE, AVOIDING EXPOSURE OF THE HANGINGWALL AS SHOWN.
  2. INITIALLY, THE ORE IN AREA 1 WILL SILLED OUT 5 M WIDE. AS EXPERIENCE IS GAINED, THE SPAN WILL BE INCREASED UP TO 9 M WIDE DEPENDING ON ROCK MASS QUALITY AND PERFORMANCE OF GROUND SUPPORT.
  3. IN AREA 2, THE DRIFT WILL BE EXCAVATED USING AN INITIAL SPAN OF 2.5m. AS EXPERIENCE IS GAINED, THE SPAN WILL BE INCREASED UP TO 4 m WIDE DEPENDING ON ROCK MASS QUALITY AND PERFORMANCE OF GROUND SUPPORT.
  4. MEASUREMENTS SHOULD BE RECORDED ON IRAD BOLTS AND GROUND MOVEMENT MONITORS TWO TIMES PER DAY OR AFTER EACH BLAST IN THE DRIFT.

TEST MINING AREA 1  
SCALE 1:100

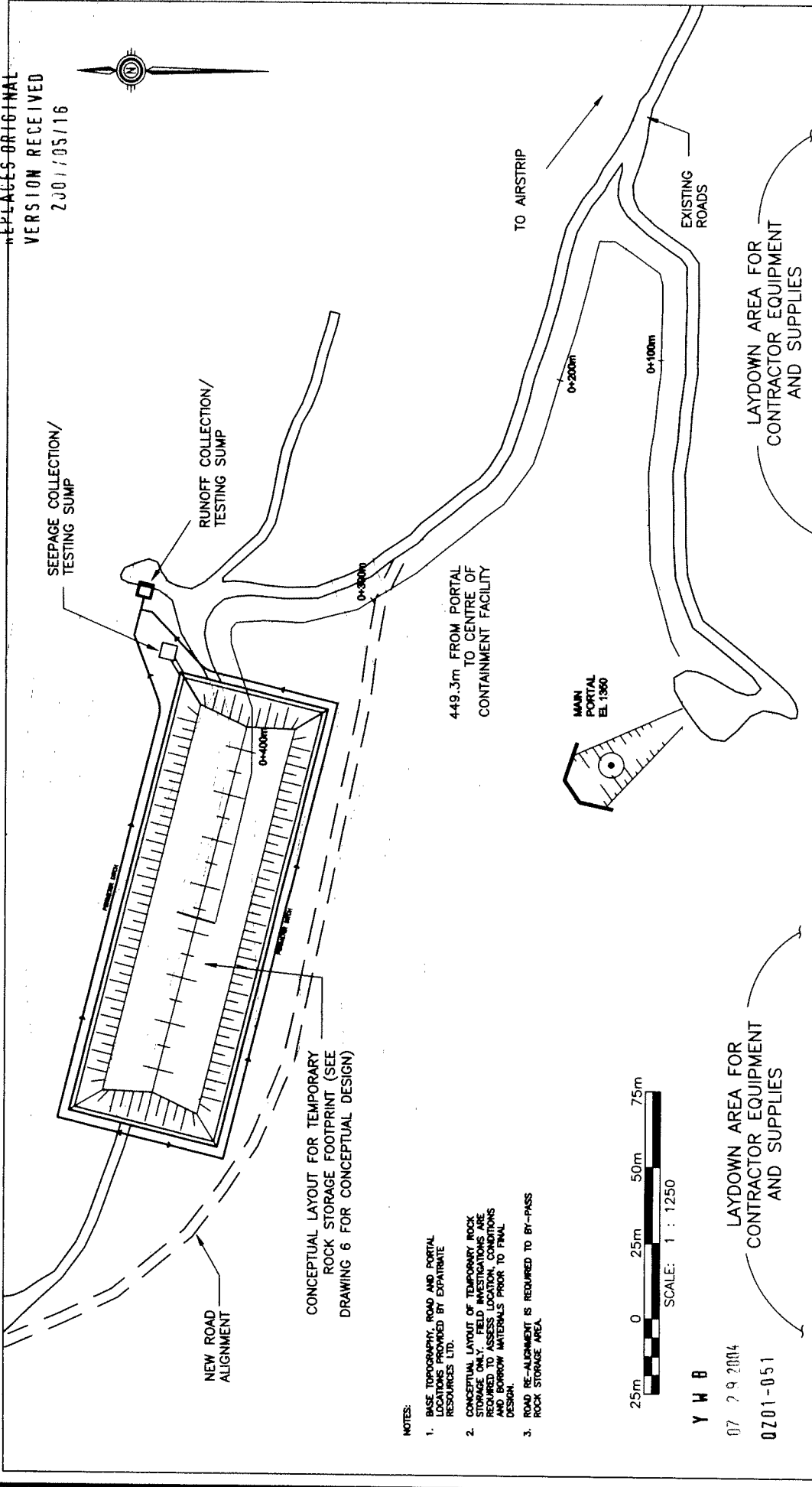
SCALE 1:100

Y W B

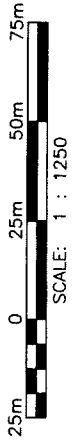
07 29 2004

0701-051

PROJECT		WOLVERINE TEST MINING PROGRAM	
TITLE		GROUND SUPPORT AND INSTRUMENTATION	
PROJECT No.		0263-002-01	
DWG. No.		FIGURE 4	
REV.		0	
SCALE: AS SHOWN		BGC ENGINEERING INC.	
DATE: MAR 2001		AN APPLIED EARTH SCIENCES COMPANY	
DRAWN:		Vancouver, B.C. Phone: (604) 684 5900	
DESIGNED:		CLIENT: EXPATRIATE RESOURCES LTD.	
CHECKED:		DRAWN (CHECKED/IMPROVED)	
APPROVED:		REVISION	
REV.	DATE	REVISION	DRAWN (CHECKED/IMPROVED)



- NOTES:
1. BASE TOPOGRAPHY, ROAD AND PORTAL LOCATIONS PROVIDED BY EXPATRIATE RESOURCES LTD.
  2. CONCEPTUAL LAYOUT OF TEMPORARY ROCK STORAGE ONLY. FIELD INVESTIGATIONS ARE REQUIRED TO ASSESS LOCATION, CONDITIONS AND BORROW MATERIALS PRIOR TO FINAL DESIGN.
  3. ROAD RE-ALIGNMENT IS REQUIRED TO BY-PASS ROCK STORAGE AREA.



Y H B  
07 29 2004  
0201-051

<p>PROJECT: <b>BGC ENGINEERING INC.</b>                  AN APPLIED EARTH SCIENCES COMPANY                  Vancouver, B.C. Phone: (604) 684 5900</p>		<p>PROJECT: <b>WOLVERINE TEST MINING PROGRAM</b></p>	
<p>CLIENT: <b>EXPATRIATE RESOURCES LTD.</b></p>		<p>TITLE: <b>SURFACE FACILITIES</b></p>	
<p>SCALE: AS SHOWN</p>		<p>PROJECT No. <b>0263-002-01</b></p>	
<p>DATE: <b>APR 2001</b></p>		<p>DWG. No. <b>FIGURE 5</b></p>	
<p>DRAWN: <b>GEJ</b></p>		<p>REV. <b>0</b></p>	
<p>DESIGNED: <b>SB</b></p>			
<p>CHECKED:</p>			
<p>APPROVED:</p>			
<p>AS A MUTUAL PROTECTION TO OUR CLIENT, THE PUBLIC AND OURSELVES, ALL REPORTS AND DRAWINGS ARE SUBMITTED FOR THE CONFIDENTIAL INFORMATION OF OUR CLIENT FOR A SPECIFIC PROJECT AND AUTHORIZATION FOR USE AND/OR PUBLICATION OF DATA, STATEMENTS, CONCLUSIONS OR ABSTRACTS FROM OR REGARDING OUR REPORTS AND DRAWINGS IS RESERVED PENDING OUR WRITTEN APPROVAL.</p>		<p>REVISION</p>	

REPLACES ORIGINAL  
VERSION RECEIVED  
2001/05/16



Camp

Wolverine Lake

Area of  
Figure 2, 3 & 5

Portal

Test Mining  
Water Discharge

Aggregate  
Borrow &  
Laydown Area

NOTES:

1. BASE TOPOGRAPHY, ROADS, CAMP SITE, AIRSTRIP, WETLAND LOCATIONS PROVIDED BY EXPATRIATE RESOURCES LTD.

Wetland at  
Airstrip

Airstrip

500m 0 500m 1000m 1500m



SCALE: 1 : 25,000

Y W B

07-29-2004

QZ01-051

AS A MUTUAL PROTECTION TO OUR CLIENT, THE PUBLIC AND OURSELVES, ALL REPORTS AND DRAWINGS ARE SUBMITTED FOR THE CONFIDENTIAL INFORMATION OF OUR CLIENT FOR A SPECIFIC PROJECT AND AUTHORIZATION FOR USE AND/OR PUBLICATION OF DATA, STATEMENTS, CONCLUSIONS OR ABSTRACTS FROM OR REGARDING OUR REPORTS AND DRAWINGS IS RESERVED PENDING OUR WRITTEN APPROVAL.

SCALE:	AS SHOWN	DESIGNED:	SB
DATE:	APR 2001	CHECKED:	
DRAWN:	GEJ	APPROVED:	



**BGC ENGINEERING INC.**

AN APPLIED EARTH SCIENCES COMPANY

Vancouver, B.C. Phone: (604) 684 5900

PROJECT WOLVERINE TEST MINING PROGRAM

TITLE SURFACE FACILITIES AND EXISTING ROADS

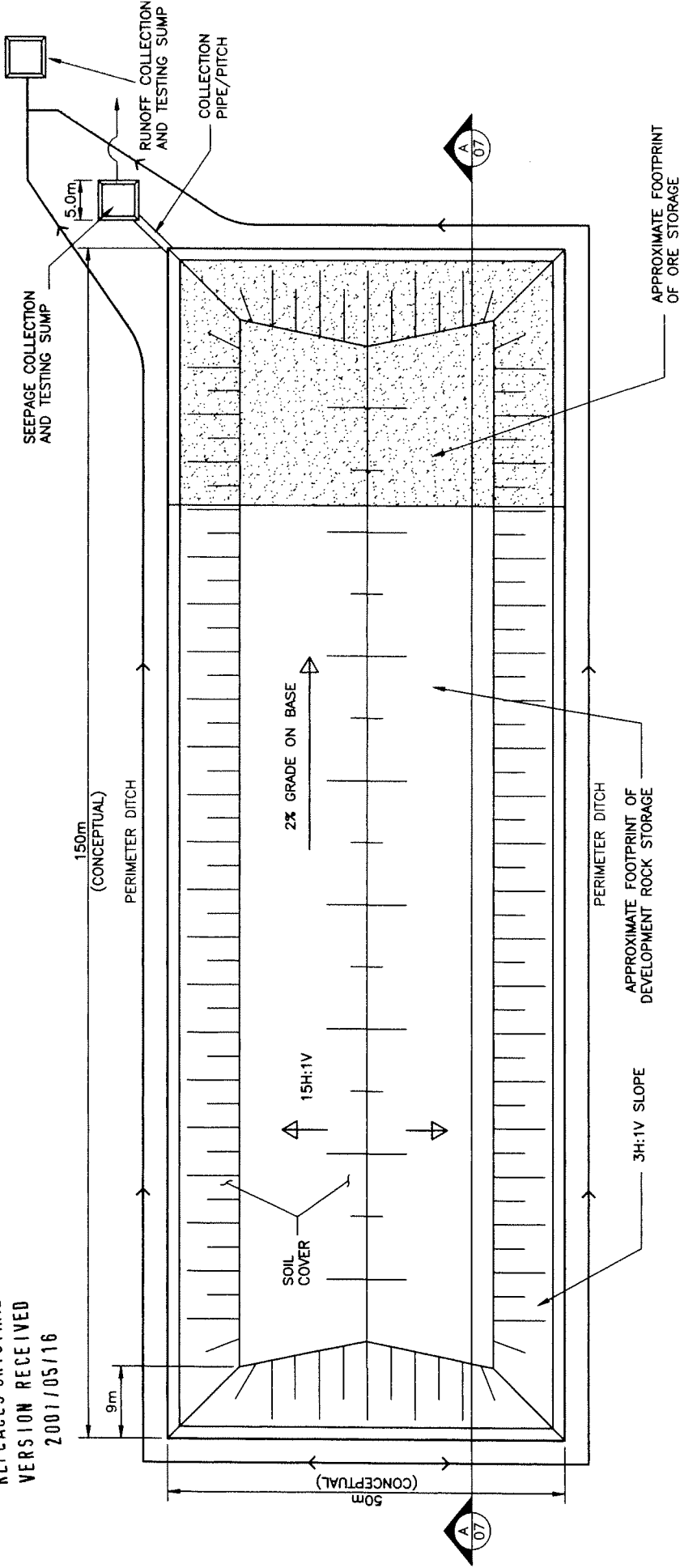
CLIENT:  
EXPATRIATE RESOURCES LTD.

PROJECT No.  
0263-002-01

DWG. No.  
**Figure 5a**

REV.

REPLACES ORIGINAL  
VERSION RECEIVED  
2007/05/16



**NOTES:**

1. THIS IS A CONCEPTUAL ROCK STORAGE FACILITY ONLY. FINAL DESIGN AND SITE ISSUES NEED TO BE ASSESSED BEFORE CONSTRUCTION.
2. INVESTIGATIONS ARE REQUIRED TO CONFIRM AND ASSESS FOUNDATION CONDITIONS, CONSTRUCTIBILITY AND SEEPAGE POTENTIAL. A LINER MAY BE REQUIRED TO PREVENT SEEPAGE.
3. SEEPAGE COLLECTION SUMP, RUNOFF COLLECTION SUMP AND ASSOCIATED DITCHES ARE CONCEPTUAL ONLY. DETAILED DESIGN IS REQUIRED TO ENSURE PERFORMANCE DURING STORM/RUNOFF EVENTS.
4. PROPOSED SOIL COVER IS COMPOSED OF WEATHERED RHYOLITE FOUNDATION ROCK. TESTS TO ASSESS IT'S SUITABILITY IN THIS APPLICATION ARE REQUIRED.

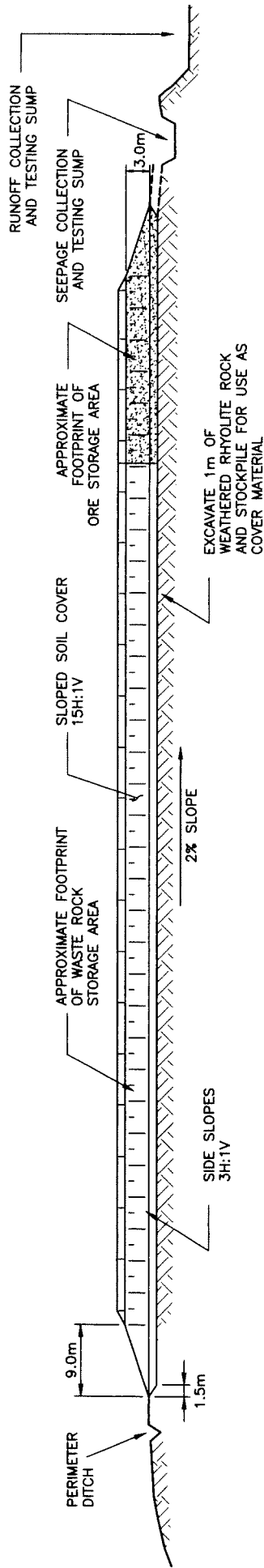
Y W B

07 29 1964

0201-051

PROJECT		WOLVERINE TEST MINING PROGRAM	
TITLE		CONCEPTUAL DESIGN OF TEMPORARY ROCK STORAGE	
PROJECT No.		0263-002-01	
DWG. No.		FIGURE 6	
REV.		0	
SCALE:		1:500	
DATE:		MARCH 2001	
DRAWN:		KB	
DESIGNED:		SB	
CHECKED:			
APPROVED:			
DRAWN/CHECKED/APPROVED:			
REVISION			
CLIENT:		EXPATRIATE RESOURCES LTD.	
Vancouver, B.C. Phone: (604) 684 5900			
BGC ENGINEERING INC.			
AN APPLIED EARTH SCIENCES COMPANY			

SECTION A  
6

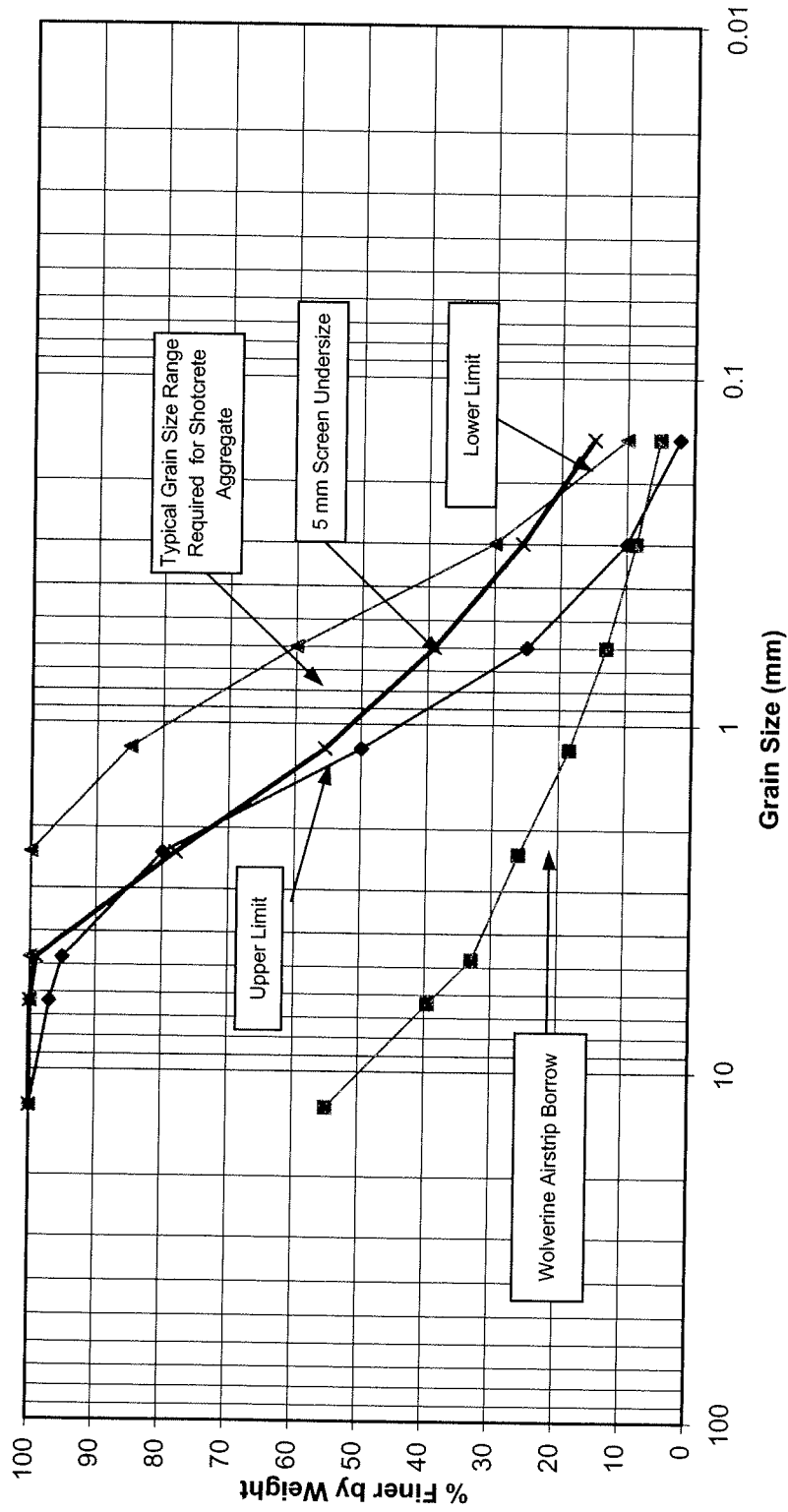


- NOTES:**
1. THIS IS A CONCEPTUAL ROCK STORAGE FACILITY ONLY. FINAL DESIGN AND SITE ISSUES NEED TO BE ASSESSED BEFORE CONSTRUCTION.
  2. INVESTIGATIONS ARE REQUIRED TO CONFIRM AND ASSESS FOUNDATION CONDITIONS, CONTRACTABILITY AND SEEPAGE POTENTIAL. A LINER MAY BE REQUIRED TO PREVENT SEEPAGE.
  3. SEEPAGE COLLECTION SUMP, RUNOFF COLLECTION SUMP AND ASSOCIATED DITCHES ARE CONCEPTUAL ONLY. DETAILED DESIGN IS REQUIRED TO ENSURE PERFORMANCE DURING STORM/RUNOFF EVENTS.
  4. PROPOSED SOIL COVER IS COMPOSED OF WEATHERED RHYOLITE FOUNDATION ROCK. TESTS TO ASSESS IT'S SUITABILITY IN THIS APPLICATION ARE REQUIRED.

Y M B  
07 20 2004  
0701-051

<p>SCALE: 1:500 DATE: MARCH 2001 DRAWN: KB DESIGNED: SB CHECKED: APPROVED:</p>		<p>PROJECT: BGC ENGINEERING INC. AN APPLIED EARTH SCIENCES COMPANY Vancouver, B.C. Phone: (604) 684 3900</p>		<p>PROJECT: WOLVERINE TEST MINING PROGRAM TITLE: CONCEPTUAL DESIGN OF TEMPORARY ROCK STORAGE 2</p>	
<p>AS A MUTUAL PROTECTION TO OUR CLIENT, THE PUBLIC AND OURSELVES, ALL REPORTS AND DRAWINGS ARE SUBMITTED FOR THE CONFIDENTIAL INFORMATION OF OUR CLIENT FOR A SPECIFIC PROJECT AND AUTHORIZATION FOR USE AND/OR PUBLICATION OF DATA, STATEMENTS, CONCLUSIONS OR ABSTRACTS FROM OR REGARDING OUR REPORTS AND DRAWINGS IS RESERVED PENDING OUR WRITTEN APPROVAL.</p>		<p>CLIENT: EXPATRIATE RESOURCES LTD.</p>		<p>PROJECT No. 0263-002-01 DWG. No. FIGURE 7 REV. 0</p>	
REV.	DATE	REVISION	DRAWN	CHECKED	APPROVED

Figure 8 - SHOTCRETE GRADATION vs. GRAIN SIZE OF SURFACE BORROW

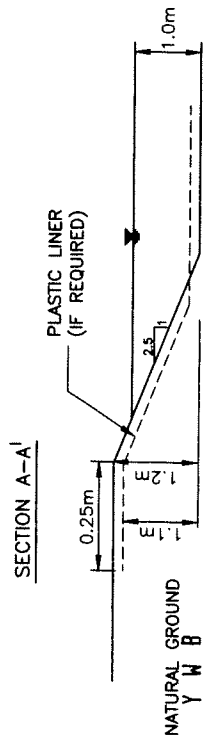
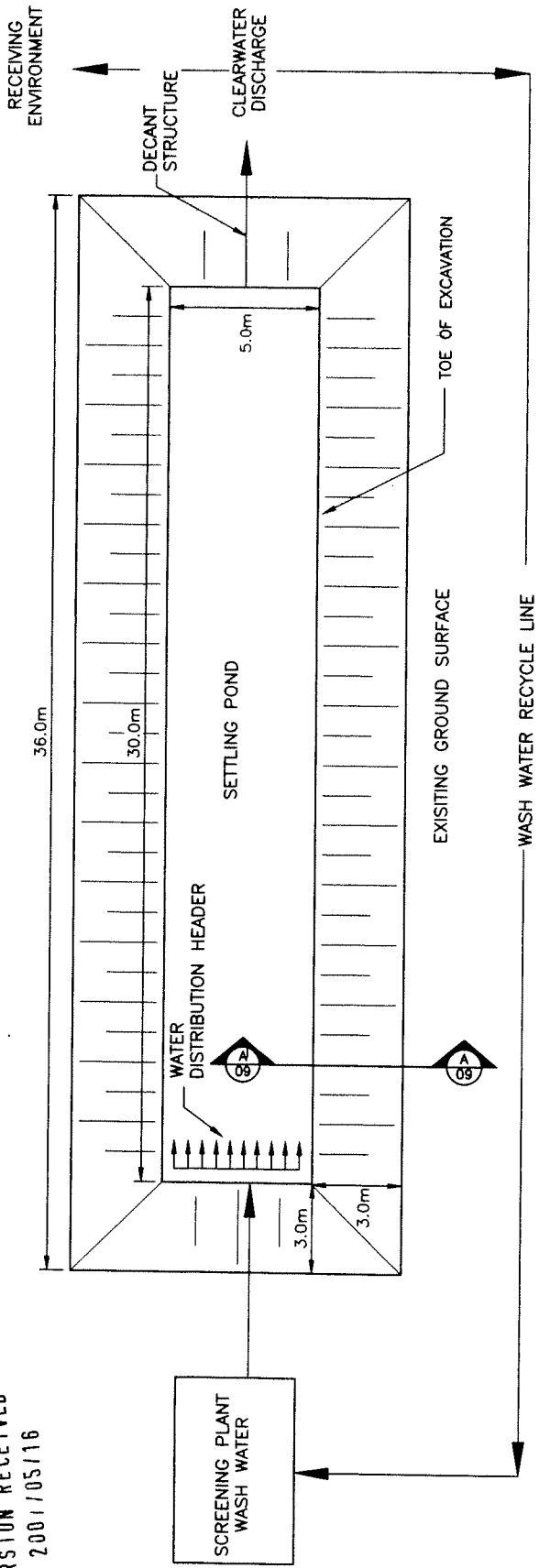


Y W B

07-19-2004

QZ01-051

REPLACES ORIGINAL  
VERSION RECEIVED  
2001/05/16



- NOTES:
1. BERM CREST ELEVATION = 1.2m
  2. LINER ELEVATION = 1.1m
  3. POND OPERATING LEVEL = 1.0m

DRAFT

AS A MUTUAL PROTECTION TO OUR CLIENT, THE PUBLIC AND OURSELVES, ALL REPORTS AND DRAWINGS ARE  
DEEMED TO BE CONFIDENTIAL INFORMATION OF OUR CLIENT FOR A SPECIFIC PROJECT AND AUTHORIZATION FOR  
USE IS LIMITED TO THE PROJECT AND THE CLIENT'S CONDITIONS OR ABSTRACTS FROM OR REGARDING OUR REPORTS  
AND DRAWINGS IS RESERVED. PENING OUR WRITTEN APPROVAL.

07 7 9 2004

0701-051

PROJECT	WOLVERINE TEST MINING PROGRAM
TITLE	SURFACE FACILITIES AGGREGATE WASH PLANT SETTLING POND
PROJECT No.	0263-002-01
DWG. No.	FIGURE 9
REV.	
CLIENT:	EXPATRIATE RESOURCES LTD.
BRUCE GEOTECHNICAL CONSULTANTS INC.	
AN APPLIED EARTH SCIENCES COMPANY	
Vancouver, B.C. Phone: (604) 684-5900	
SCALE: AS SHOWN	
DATE: APR 2001	
DRAWN: KB	
DESIGNED: SB	
CHECKED: -	
APPROVED: -	
REFERENCE DRAWING No.	REFERENCE DRAWING DESCRIPTION
REV.	DATE
	DRAWN (CHECKED) APPROVED