

A. GENERAL INFORMATION

1. Name of Applicant:

Yukon Zinc Corporation

2. Are you applying for a Type A Licence or a Type B Licence?

Type A (X) Type B ()

Note: This is not an application but revised documentation in support of existing application Licence QZ04-065.

3. If you are applying for a Type B Licence, confirm that every aspect of your proposed undertaking does not exceed the licensing criteria specified in Column III of Schedule VII of the Waters Regulation.

N/A

4. Name of Waterbody(ies):

Wolverine Creek (1), Little Wolverine Lake (1), Go Creek (2)

5. Tributary of:

(1) Wolverine Lake Watershed, (2) Money Creek Watershed

6. Maps

a) National Topographical System (NTS) 1:50,000 scale Map Sheet Number(s):

NTS Sheets 105G08, 105G09, 105H12, 105H05

b) Indicate your project location on a 1:50,000 topographical map, or part thereof. Please ensure that the map sheet number is clearly indicated, selected UTM grid lines are labeled and the UTM zone is indicated.

See Figure 6.1-1 Volume III

c) Attach a copy of the claim map for the project area and outline your claims.

See Figure 6.1-2 Volume III

- 7. Provide map co-ordinates for the project. If the project covers an area, provide the co-ordinates for a box that includes the entire project as well as the co-ordinates of the centre of the project area.**

See Figure 6.1-1 Volume III for coordinates and box encompassing the entire project area

Minimum Latitude	6,804,230N	Maximum Latitude	6,819,088N
Minimum Longitude	436,729E	Maximum Longitude	454,225E
Centre Latitude	6,811,659N	Centre Longitude	445,477E

- 8. Nearest Community:**

Ross River

- 9. Name of Highway and Kilometer Location:**

Robert Campbell Highway (Highway 4), intersects Wolverine Project access road at km 190

(See Figure 6.1-1 Volume III)

- 10. In which First Nation Traditional Territory (or Territories) is your project located?**

Kaska First Nation traditional territory as shown in Figure 10.1-1. In the Yukon, the Ross River Dena Council and the Liard First Nation comprise the Kaska First Nation.

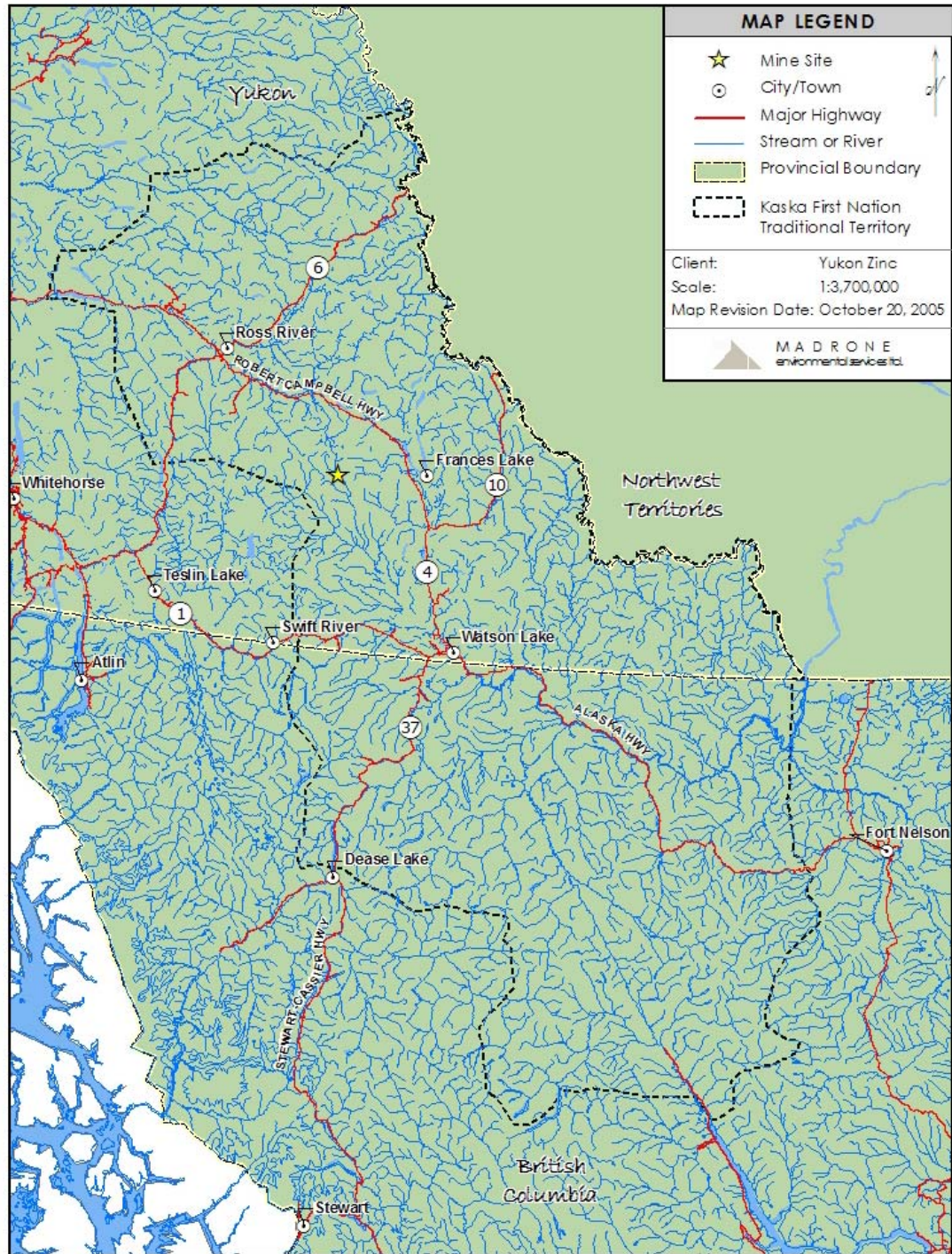


Figure 10.1-1: Location of the Wolverine Project within the Traditional Territory of the Kaska First Nation

11. Is your project located on or near First Nation Settlement Land?

Yes () No (X)

Will water flowing from your project flow on or adjacent to First Nation Settlement Land?

Yes () No (X)

12. Have you contacted the First Nation(s) regarding your project?

Yes (X) No ()

If so, provide details.

Consultation on the Wolverine Project with the Kaska Nation began in 1995 with Atna Resources Ltd. and Westmin Resources Ltd. in the form of meetings through advisory committees, technical working groups, and public open houses. In 1997-8, an Aboriginal Liaison Officer (ALO) was appointed in Ross River to liaise between the Kaska Nation and Wolverine Project. The position was reinstated during 2000-1 by Expatriate Resources Ltd. (now named Yukon Zinc Corporation (YZC)) and again in 2005 by YZC, and is currently active.

YZC has contacted the Ross River Dena Council (who acts on behalf of the Kaska Nation, its bands and their respective members for the Wolverine Project), regularly through 2005 and 2006 during the development of two agreements:

- In July 2005, YZC signed a Socio-Economic Participation Agreement on July 12, 2005 with the Ross River Dena Council (RRDC) that provides a basis for participation by all Kaska in project exploration and development activities, including the review of environmental, social and economic matters related to these activities and the environmental assessment and permitting of the Wolverine Project. As a result of the agreement, the Kaska have become shareholders of YZC and support the development of the project.
- YZC entered into a Traditional Knowledge (TK) Protocol Agreement with the RRDC on September 28, 2005 to ensure that traditional knowledge was not compromised in any way by ongoing or future project activities. Elder interviews were conducted by the RRDC TK Coordinator from September to December, 2005 and a helicopter overview flight was conducted on October 5, 2005. The TK Report was submitted to YZC in February 2006. Ground truthing by land stewards representing the RRDC and Liard First Nation was conducted along proposed road route from June 14-16, 2006.

In 2005 and 2006 several public open houses, public meetings, and meetings with the RRDC Chief and Council were conducted (primarily in Ross River) and included:

- Review of the draft SEPA agreement and update on project activities – February 15 and July 4, 2005
- Project activities update at the Annual General Assembly - June 15, 2005
- SEPA signing ceremony at the Wolverine Project site – August 16, 2005

- Public open house on Environmental Assessment Report – November 21, 2005
- Community open house and consultation in Ross River and Watson Lake – January 4 and 5, 2006
- Update on project activities, permitting status, Kaska employment summary and training initiatives – January 18, May 1 (Chief and Council meeting followed by public open house), and July 5, 2006
- Public meeting on Wolverine Project Environmental Assessment for RRDC and LFN members in Ross River (May 29-30, 2006)
- Introduction to Mining community training seminars – May 23, 24 (Ross River), August 9, 2006 (Watson Lake)
- Meeting to discuss the Quartz Mining License with RRDC and LFN leadership in Whitehorse - December 1, 2006

13. Are there any existing licences or pre-existing applicants whose use of water may be affected by your project?

Yes () No (X)

14. Are there any other surface water or groundwater users that might be affected by your project?

Yes () No (X)

15. Does the undertaking require any other permits (e.g. land use permit, quarry permit, timber permit, etc.)?

Yes (X) No ()

If YES, specify the type of permit and its status.

The permits and approvals required for the Wolverine Project include:

- A Quartz Mining License (QML-0006) under the *Yukon Quartz Mining Act* issued by the Yukon Department of Energy, Mines and Resources (EMR) and approved by the territorial Minister responsible. Received December 5, 2006.
- Land Treatment Facility Permit (No 4202-24-022) under the *Environment Act and Contaminated Sites Regulation* issued by the Department of Environment, Environmental Programs. Received June 2, 2006.
- Solid Waste Management Permit under the *Environment Act*, Section 5.(1) of the *Solid Waste Regulations*, submitted to Yukon Department of Environment on October 13, 2006. Status: Pending for current site activities; an amendment may be required as quantities change with project requirements.
- Special Waste Permit under *Environment Act*, Section 8.(1) of the *Special Waste Regulations* submitted to Yukon Department of Environment on October 13, 2006.

Status: Pending for current site activities; an amendment may be required as quantities change with project requirements.

- Air Emissions Permit under *Environment Act*, Section 5 of the *Air Emissions Regulations* submitted to Yukon Department of Environment on October 13, 2006. Status: pending for current site activities.
- An Access Permit under *Policy Number 3.2* from Yukon Department of Highways and Public Works is required for access to the Robert Campbell Highway. Detailed access road design has been completed and the *Application for Access to Highway* has been submitted by Yukon Engineering Services on behalf of YZC.